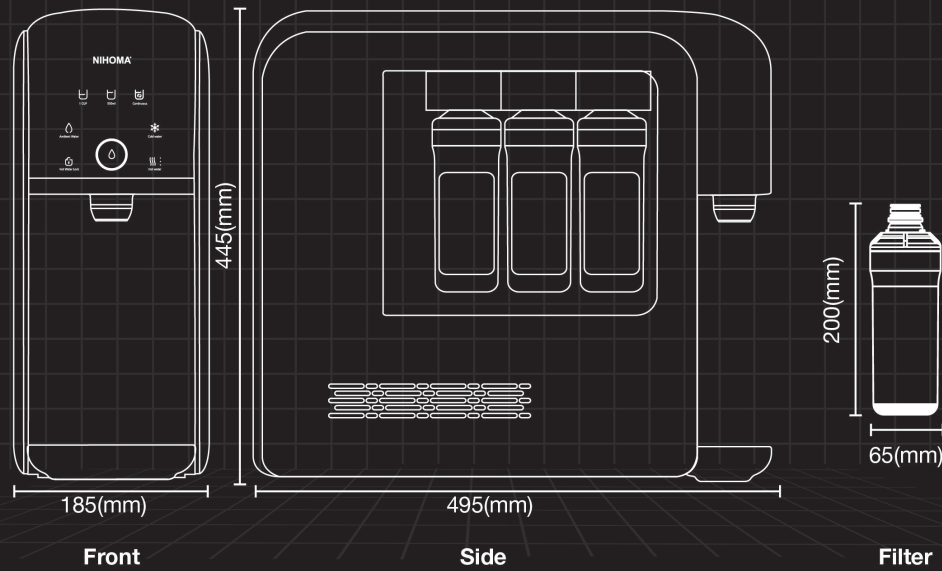


# Specifications



Product Name	Waterbar Pro (Tankless Instant Hot & Cold Water Purifier)	Brand Name	NIHOMA®
Model No.	N0918-CHW	Rated Voltage	220v-240v~, 50Hz
Power Consumption	Hot Water 2300 W Cold Water 0.6 A (85 W)	Major Features	Tankless Water Purifier (Instant Cooling / Instant Heating)
Refrigerant	R-134a (30g)	Operating Pressure	1.5 kgf/cm <sup>2</sup> - 7.0 kgf/cm <sup>2</sup> (147.1 kPa - 686.5 kPa)
Minimum Flow Rate of Feed Water	2 L/min	Feed Water Temperature	5°C ~ 35°C (41°F - 95°F)
Size (W x D x H)	185mm (W) x 490mm (D) x 445mm (H)	Weight	15 kg
Installation Location	Indoor only such as Household / Office (Designed for Tap Water)	Ingress Protection	IPX1
Climatic Class	T	Filter System	Nano Filtration (NF)
Compressor	LG Electronics Inc.	Country of Manufacture	Republic Of South Korea

**NIHOMA®**  
"Improving Your Quality Of Life"

**CUSTOMER CARELINE : 1300 - 88 - 3939**  
[www.nihoma.com.my](http://www.nihoma.com.my)

[/nihomamalaysiaofficial](https://www.facebook.com/nihomamalaysiaofficial)

Distributed and Marketed by:

**Eco-World Wellness (M) Sdn. Bhd.** (1129 0986-V)

Malaysia HQ:

No. 46, Tingkat 1, Lorong Kelasah 3, Taman Kelasah, 13700 Seberang Jaya, Perai, Butterworth, Pulau Pinang.

WE ACCEPT



introducing

# waterbar PRO

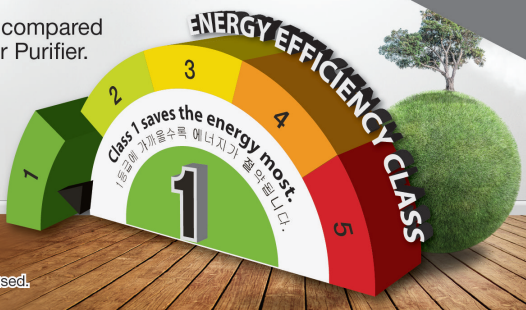
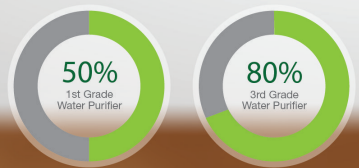
Smart . Instant . Energy Saving.



DESIGNED IN UK | MADE IN KOREA

# 5 Star Rated Energy Saving Appliances

For the energy efficiency, Waterbar Pro can save 50% compared to 1st Grade Water Purifier and 80% 3rd Grade Water Purifier.



Under the power saving model, 50% power would be saved if the appliance is not used.  
Energy Efficiency Class would be different based on the different environment.

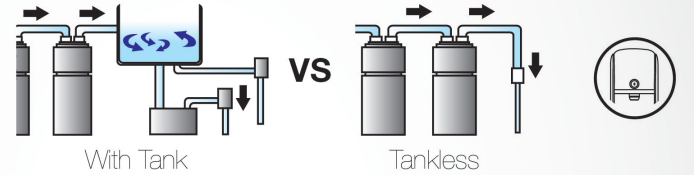
# NIHOMA®

# 1st Smart Tankless Water Bar in Malaysia.



Dispense fresh filtered water according to your desire at one touch.

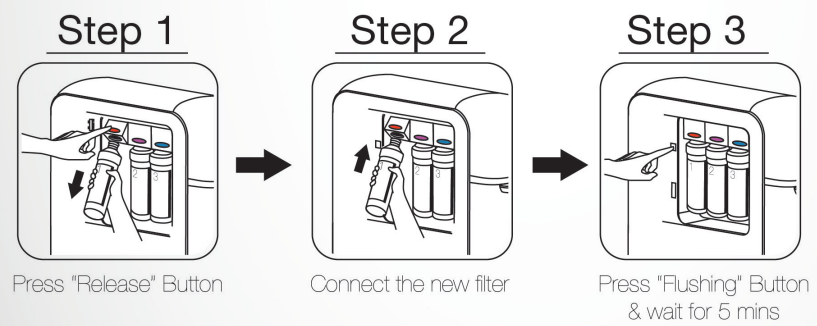
The Waterbar Pro comes with instant cooling & heating system. Say goodbye to tank-type water purifier.



## Intelligent Temperature Control System



## Easy Filter Replacement System



3 Easy Steps



## Exchangeable Tap

The tap can be separated by hand and wash it easily.



## One-Touch Quantitative Extraction

The One-touch button allows you to easily select pure, cold and hot water.

You can also remove the tray and use various sizes of bottles.



High Performance Nano-Filtration (NF) Advanced Technology

## 5-Stage Filtration System

Our filters utilise 3 NSF certified materials that are engineered to remove 99.999% of water contaminants and leave the healthy minerals needed by our bodies.

